

Update on Resynchronization after Diagnosed Open

COOPERATIVE
EXTENSION
SERVICE

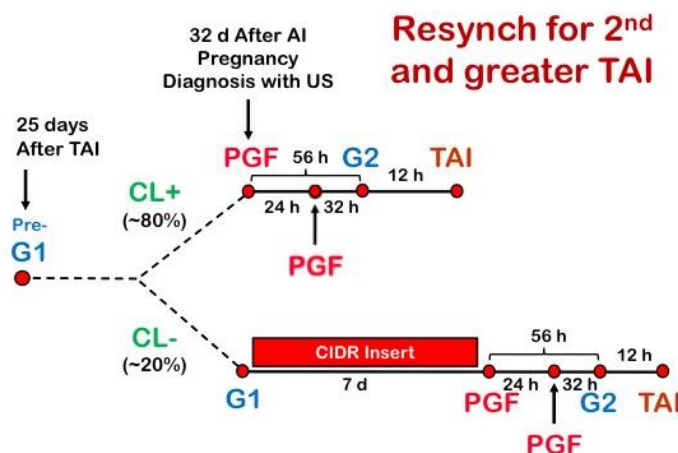


By: George Heersche, Jr., Ph.D.

Aggressive timed A.I. programs often include pregnancy diagnosis with ultrasound 32 to 40 days after insemination and implementation of a resynchronization protocol for open cows.

Recent research has shown two different protocols should be used depending on if a CL is present or not present at the open diagnosis.

Here is the protocol that is being used successfully with the University of Wisconsin dairy research herd.



(Figure is borrowed from Dr. Paul Fricke, U-W Madison Extension Dairy Specialist)

(Abbreviation key: CL = Corpus Luteum; G = Gonadatropin-Releasing Hormone; PGF = Prostaglandin F2 alpha; US = Ultrasound)

Educational programs of Kentucky Cooperative Extension serve all people regardless of race, color, age, sex, religion, disability, or national origin.